



HACIENDA DE SAN ANTONIO®

*Colima, Mexico*





Located at the foothills of Volcano of Colima, in the picturesque highlands of Mexico, is the captivating Hacienda de San Antonio. It is a place blessed with eternal spring, with exuberant and extraordinary gardens unfolding into immense vegetation and the hacienda's own Rancho Jabalí, from where most of the produce served on property is sourced. With just 25 individually designed suites, this is an exclusive destination offering the highest levels of personalized service and a range of outdoor activities immersing guests into the unspoilt nature surrounding the property.



<i>Travel Time</i>	BY CAR	BY PLANE*
--------------------	--------	-----------

**PRIVATE TRANSFERS**

COLIMA TO HSA	45 MIN	
MANZANILLO TO HSA	2 HRS	45 MIN
GUADALAJARA TO HSA	3 HRS	1 HR
CUIXMALA TO HSA	3 HRS	1 HR

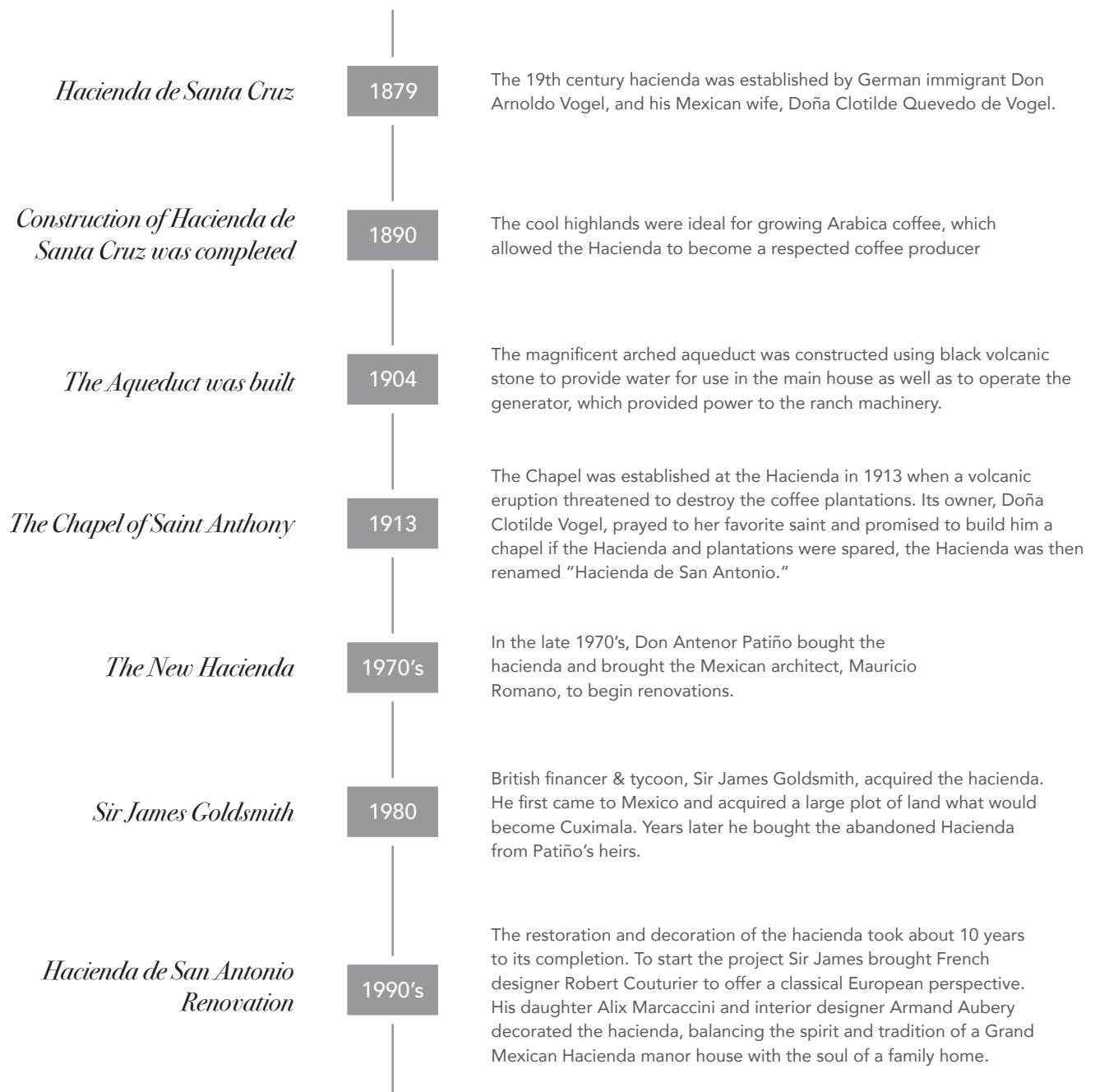
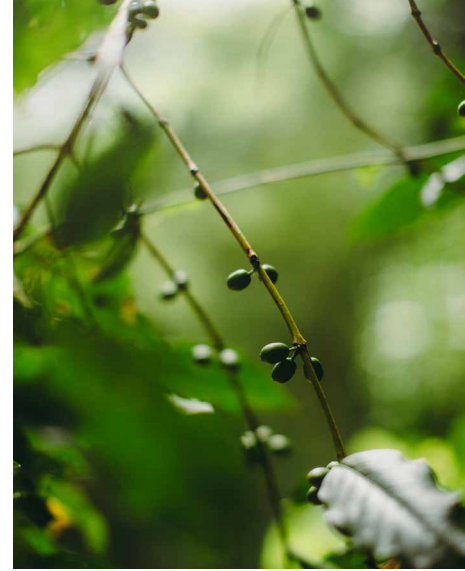
**COMMERCIAL FLIGHTS**

MEXICO CITY TO MANZANILLO	1 HR
MEXICO CITY TO COLIMA	1 HR 20 MIN



\*Private Transfers to the Hacienda's landing strip can be organized upon request.

# *the history of* HACIENDA DE SAN ANTONIO®





## *suites*

Thoughtfully decorated by owner Alix Marcaccini and interiors designer Arman Aubery, Hacienda de San Antonio's 22 spacious Suites and 3 Grand Suites combine colonial grandeur with the spirit and tradition of a large Mexican house. Occupying 3 bougainvillea-covered sides of the house and offering Garden, River and Volcano views, all suites are located across 2 stories around a plant filled courtyard. Decorated with hand-made wool carpets from Oaxaca, European textiles and art pieces from the personal collection of the family, each room has its own character and color palette.

Each of the 25 impeccably decorated suites use the bright colors of Mexico and are complete with high-ceilings, working stone fireplaces and tiled bathrooms. Ground floor suites lead out to a shared volcanic stone terrace, and each of the second floor suites has step out balcony.

An overstuffed chair and matching footstool invite to relax, whilst sipping a coffee or cocktail from the impressive minibar. Cashmere throws are provided for fresh mountain evenings, as are locally inspired amenities, including soap produced at the Hacienda's own Rancho Jabali.

- 540-640 sqft.
- Open-plan bedroom and living room
- Spacious bathrooms with bathtub and underfloor heating
- French style doors to volcanic stone terrace or step-out balcony
- Fireplace
- King-size bed
- Bose speaker system and high-speed wifi

## *garden* VIEW

10 Garden Suites face towards the formal gardens which are inspired by Alhambra Palace. Each Suite has French style doors leading to a volcanic stone terrace with outdoor seating on the ground floor, and step out balcony on the second floor.



## *river* VIEW

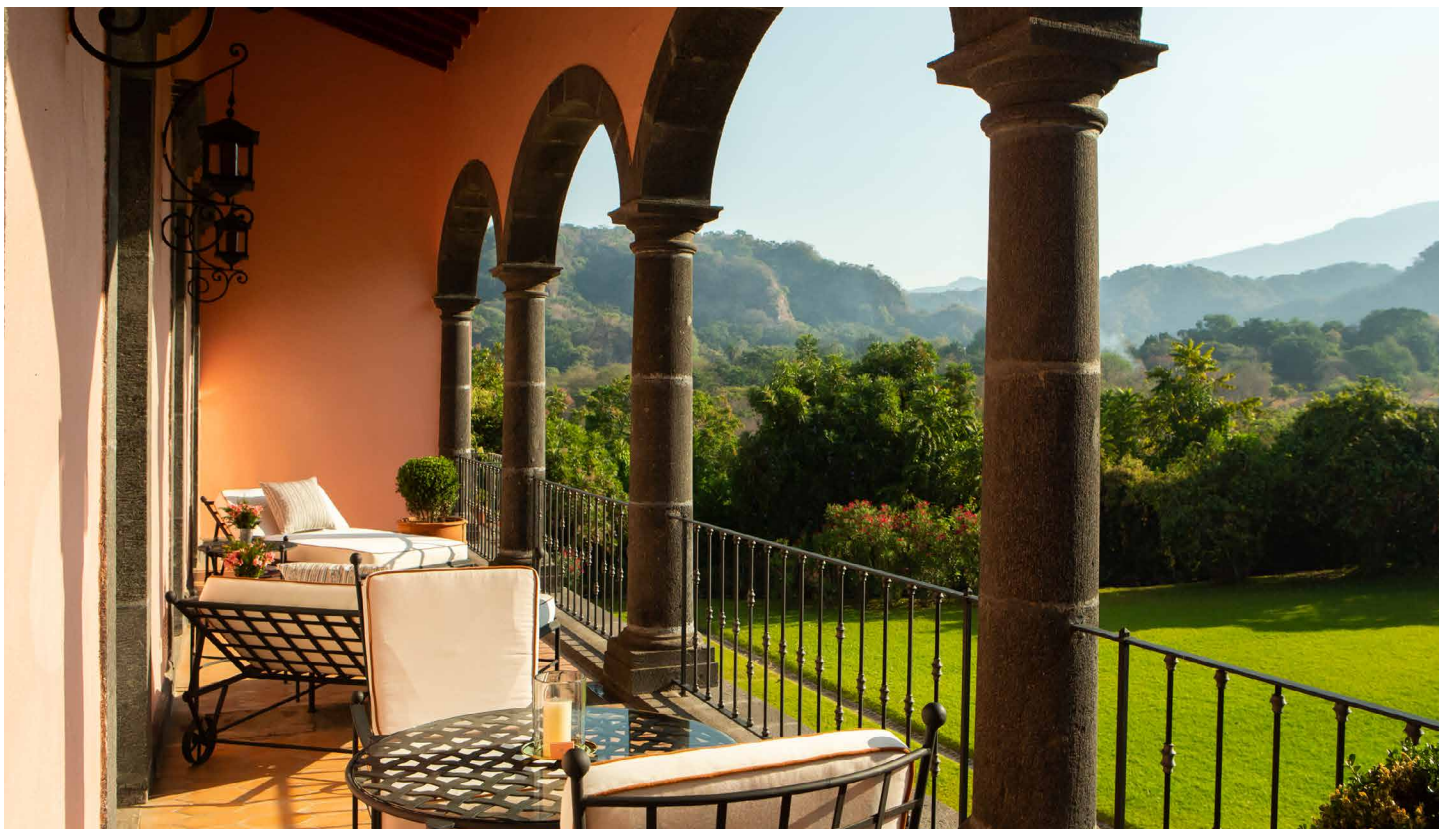
4 river view Suites face towards the River Valley. 2 suites are located on the ground floor and 2 on the second floor. Each Suite has French style doors leading to an extended volcanic stone terrace with outdoor seating and sun loungers.



## *volcano* VIEW

8 Volcano view Suites look out over the majestic Volcano of Colima and Hacienda's aqueduct. 6 suites are located on the ground floor with direct access through French style doors to the peaceful backyard garden, and 2 are located on the second floor with step out balconies.





## *grand suites*

Hacienda de San Antonio's 3 signature Grand Suites provide ample space, light and spectacular views over the formal gardens, River Valley and Volcano of Colima. The living rooms are set up for lounging with plush sofas and arm chairs as well as a writing desk stocked with custom made Hacienda de San Antonio stationary. Each Grand Suite has an impressive minibar and cocktail station, including coffee and mangrappa produced at Rancho Jabali.

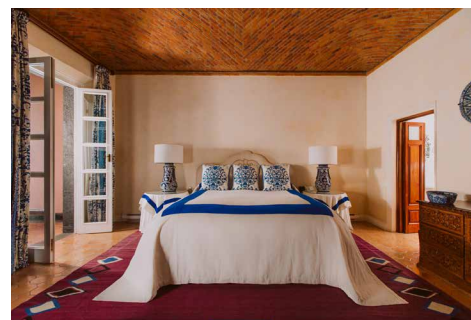
The 3 Grand Suites, all located on the second floor benefit from a separate living room with its own fireplace and additional full en-suite bathroom. Grand Suites 'El Quetzal' and 'El Sol' have an extended volcanic stone and ceramic floor terrace, whilst 'El Volcan' occupies an enviable corner position with views towards the river and the mighty volcano as well as 4 step out balconies.



GRAND SUITE EL SOL



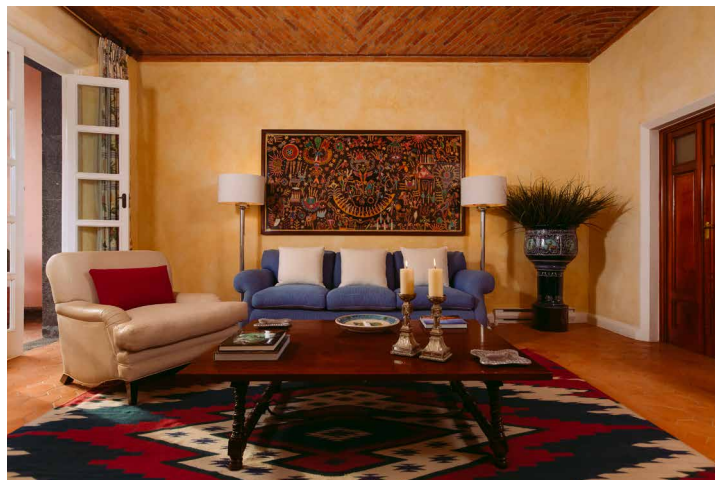
GRAND SUITE EL VOLCÁN



GRAND SUITE EL QUETZAL

## *el sol*

- Garden view
- 1,400 sqft.
- Located on second floor
- Separate bedroom and living room
- 2 fireplaces
- 2 large bathrooms
- French style doors to private terrace
- King-size bed
- Bose speaker system and high-speed wifi



## *el volcán*

- 1,400 sqft.
- Located on second floor
- Separate bedroom and living room
- 2 fireplaces
- 2 large bathrooms
- Volcano view
- Corner living room with step-out balconies
- King-size bed
- Bose speaker system and high-speed wifi



## *el quetzal*

- Volcano View
- 1,400 sqft.
- Located on second floor
- Separate bedroom and living room
- 2 fireplaces
- 2 large bathrooms
- French style doors to private terrace
- King-size bed
- Bose speaker system and high-speed wifi







*Organic Gastronomy*

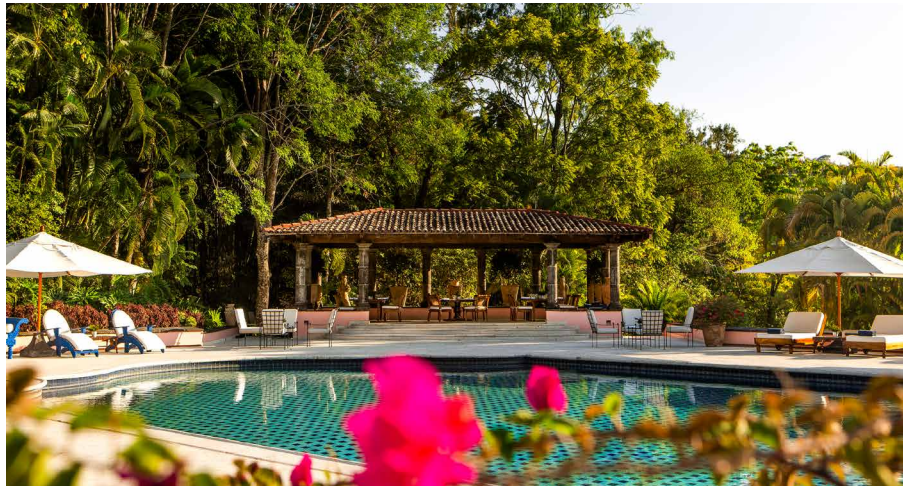
Our refined cuisine is based on the finest traditional Mexican recipes, with the occasional touch of international influences. In addition to the main restaurant, meals are served in enchanted private corners of the Hacienda, and on request can be accompanied by a pianist or a traditional Mariachi band. A key characteristic of our dining experience is the use of seasonal and organic ingredients sourced directly from the Hacienda's organic gardens and farm, as well as from our sister property – Cuixmala. It is a daily tradition for our guests to gather in the Yellow Room for afternoon tea, lovingly prepared by the Hacienda's chefs.





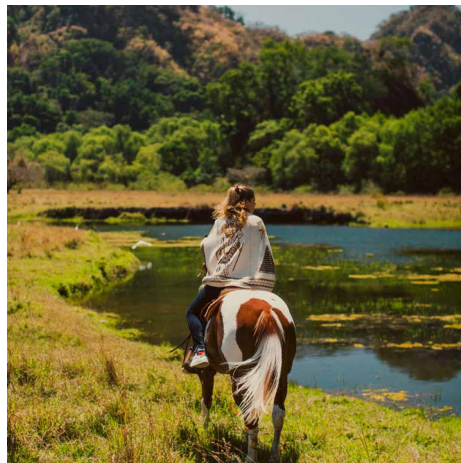
*Living Spaces*

The Hacienda's richly detailed rooms provide a sumptuous backdrop to life at the Hacienda. The Yellow Bar, with its views to the garden, is the social hub for evening cocktails and lively conversation. The wood beamed library is a quiet retreat while the light filled Mirador room is ideal for reading or a movie. The striking Club Room with its volcanic stone columns is a place for dining, gathering or special events.



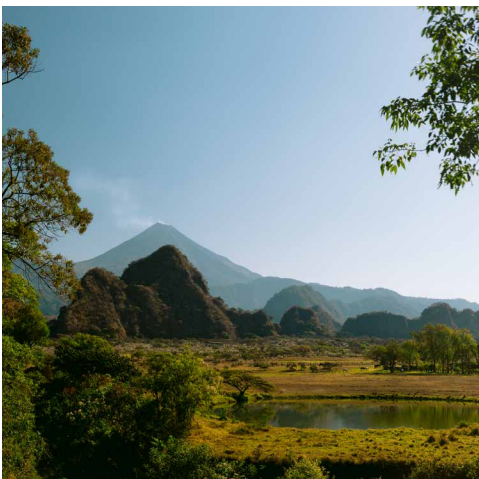
### *Activities & Excursions*

- Horseback Riding
- Mountain Biking
- Hiking
- Tennis
- Spa Services
- Historic Hacienda Tour
- Cheese and Coffee Making Tour
- Hot Air Balloon
- Skydiving
- 4WD Quad Tours
- Picnics on Rancho Jabali
- Baking Class
- Painting Class
- Cocktail Class
- Cow Milking
- Charreada
- Stand Up Paddle Boarding



### *Off Property Activities*

- Volcano Excursion
- Golf at Altozano Colima
- Historic Pueblo Tour in Comala





# HACIENDA DE SAN ANTONIO®



[WWW.HACIENDESANANTONIO.COM](http://WWW.HACIENDESANANTONIO.COM)

*Hacienda de San Antonio*  
Domicilio Conocido, San Antonio,  
Comala, 28463 Colima, Col.

*Direct Tel.* | +52 (312) 316 0300  
*Mexico* | 01 800 590 3845  
*UK* | 808 101 3780

*reservations@haciendadesanantonio.com*